

**PHISON**

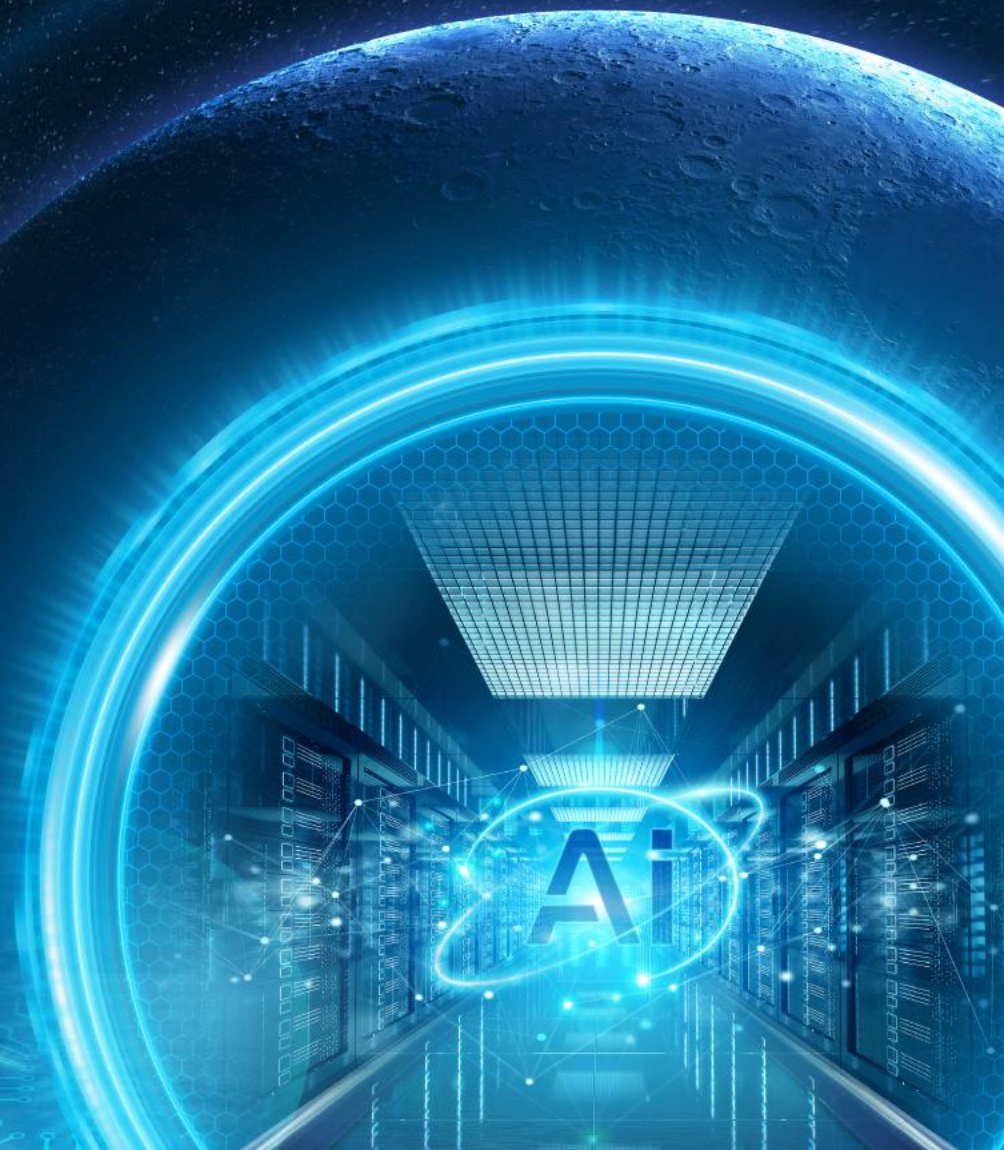
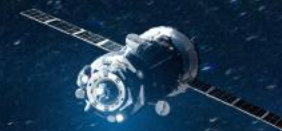


**COMPUTEX**  
TAIPEI

COMPUTEX 2026

# Media Update

June 2026



# Quick Facts About Phison

**\$2.3B**

2025 Revenue

**25**

Years of Experience

## BUSINESS FOCUS

Enterprise

AI

Client/Consumer

Embedded

Automotive

High-Speed Signal



**25%**

Global Client SSD  
Market Share



**5000+**

Global Headcount  
75% R&D



**80%+**

R&D Exp. / OPEX

# PHISON

## COMPUTEX 2026

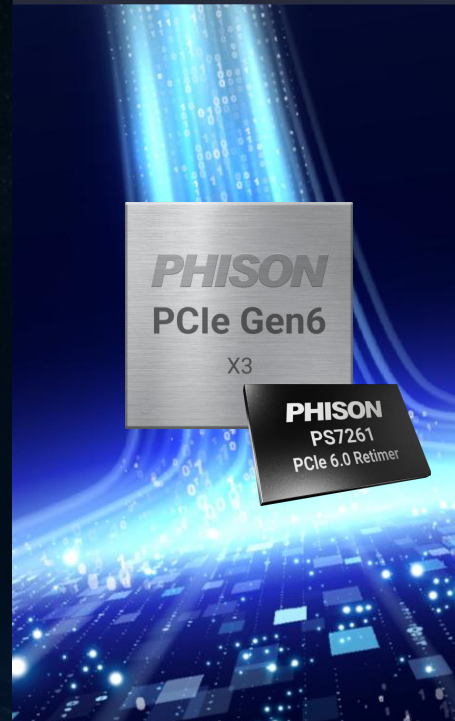
Enterprise



AI



PCIe Gen6



Client



Mobile





# Enterprise SSD

---





Up to 245.76 TB

**Built for ultra-high-capacity  
storage at data center scale**



# D206V Ultra-High-Capacity Gen5 SSD

Designed to Meet Accelerating Capacity Demands



- PCIe Gen5 1x4 (Single port) / 2x2 (Dual port)
- NVMe 2.0
- OCP v2.0
- Form Factor: U.2 15mm / E3.S 1T / E3.L 1T / E1.L 9.5mm
- Capacity up to 245.76TB
- DWPD: 0.3
- MTBF: 2.5 million hours
- 3D QLC supported
- 128 Namespaces
- ISE, TCG Opal supported
- NVMe-MI supported
- Power Loss Protection (PLP)



## Sequential Performance

Read: up to 14,000 MB/s

Write: up to 3,400 MB/s

## Random Performance

Read: up to 2,700K IOPS (4K)

Write: up to 40K IOPS (16K)



# Enterprise SSD Portfolio

Powering Every Tier of Enterprise Storage

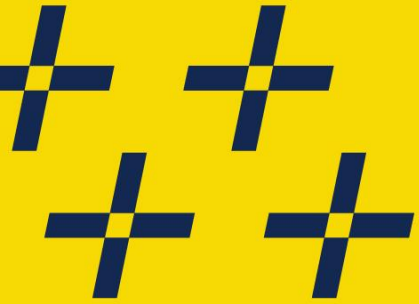
	X202Z	D250P	B200P	X201	D201
Form Factor	U.2 15mm, E1.L 9.5mm	E1.S 9.5mm	M.2 2280	U.2 15mm, E3.S 1T	E1.S 9.5mm, 15mm
Interface	PCIe Gen5 2x2	PCIe Gen5x4	PCIe Gen5x4	PCIe Gen5 1x4, 2x2	PCIe Gen5 1x4, 2x2
Capacity	1.6TB – 6.4TB	480GB – 3.84TB	480GB – 7.68TB	1.6TB – 30.72TB	1.6TB – 15.36TB
Seq. Read (MB/s)	Up to 14,800	Up to 13,800	Up to 13,800	Up to 14,800	Up to 14,800
Seq. Write (MB/s)	Up to 10,000	Up to 6,900	Up to 6,900	Up to 11,800	Up to 11,000
Ran. Read (IOPS)	Up to 3,000K	Up to 2,200K	Up to 2,200K	Up to 3,300K	Up to 3,300K
Ran. Write (IOPS)	Up to 850K	Up to 255K	Up to 255K	Up to 1,050K	Up to 1,050K
DWPD	60	1	1	1, 3	1, 3
Security	<ul style="list-style-type: none"><li>• AES-256</li><li>• ISE Support</li></ul>	<ul style="list-style-type: none"><li>• AES-256</li><li>• TCG Opal 2.0</li></ul>	<ul style="list-style-type: none"><li>• AES-256</li><li>• TCG Opal 2.0</li></ul>	<ul style="list-style-type: none"><li>• AES-256</li><li>• TCG Opal 2.0</li></ul>	<ul style="list-style-type: none"><li>• AES-256</li><li>• TCG Opal 2.0</li></ul>
Feature	<ul style="list-style-type: none"><li>• Dual port</li><li>• 128 Namespaces</li><li>• E2EDPP</li><li>• PLP</li></ul>	<ul style="list-style-type: none"><li>• 64 Namespaces</li><li>• E2EDPP</li><li>• PLP</li></ul>	<ul style="list-style-type: none"><li>• 128 Namespaces</li><li>• E2EDPP</li><li>• PLP</li></ul>	<ul style="list-style-type: none"><li>• Dual port</li><li>• 128 Namespaces</li><li>• E2EDPP</li><li>• PLP</li></ul>	<ul style="list-style-type: none"><li>• Dual port</li><li>• 128 Namespaces</li><li>• E2EDPP</li><li>• PLP</li></ul>

# Phison's In-House PCIe Gen6 Controller - X3

- PCIe Gen6x4
- NVMe 2.3
- OCP v2.6
- Capacity supports up to 2PB
- Security: TCG Opal 2.3, DOE, IDE, Caliptra, CNSA 2.0
- SR-IOV: 64 Physical Functions (PFs)



	X3	PCIe Gen5 CTL	X3 Advantage
Sequential Read / Write (MB/s)	28,000 / 28,000	14,000 / 14,000	2x higher
Random Read / Write (IOPS)	6,800K / 6,800K	3,300K / 3,300K	2x higher
Power Efficiency (MB/s per watt)	4,000	2,000	2x higher



*"The latest Pascari product iteration has quickly secured a strong position in the market. The lineup is exceptionally comprehensive, addressing a wide range of requirements driven by key technological trends."*

***Philippe Nicolas, owner and editor of  
StorageNewsletter***

**PHISON**

**PASCARI**

**Storage**.com  
**Newsletter**

**MEDIA**

**WINNER** 2026



**OPEN**  
Compute Project  
SOLUTION PROVIDER®



**OCP**  
**INSPIRED™**

# The Pascari X201 & D201 Now OCP Inspired™



Learn more:

X201: <https://www.opencompute.org/products/794/phison-pascari-x201-ssd>

D201: <https://www.opencompute.org/products/803/phison-pascari-d201-ssd>

# Phison AI Solution

---

Powering Sovereign AI - Build, Train, and Run AI Anywhere





# Phison's Pascari aiDAPTIV™ AI PC Solution Wins COMPUTEX Best Choice Award



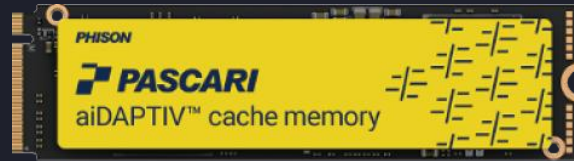
**PHISON**

# What's Pascari aiDAPTIV™ ?

Pascari aiDAPTIV™ is a purpose-built solution that combines aiDAPTIV Cache Memory and aiDAPTIV Memory Management Middleware to help memory-intensive AI workloads run on local systems by extending effective memory.

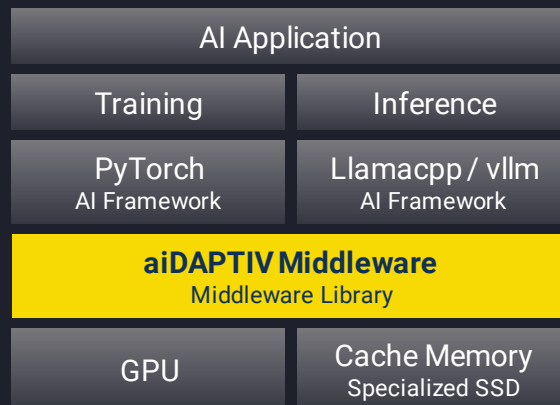
## aiDAPTIV Cache Memory

A purpose-built SSD optimized for AI workloads. This acts as an additional memory tier to extend total memory for AI.



## aiDAPTIV Memory Management Middleware

The software layer that orchestrates data across GPU memory, system memory, and aiDAPTIV Cache Memory.



## Benefits

### • For training

aiDAPTIV helps teams keep workloads on-prem for better privacy and data sovereignty, while reducing the need for larger and more expensive GPU infrastructure.

### • For inference

Run more complex, memory-hungry workloads locally, including larger models, longer context, and agentic AI workflows.



Private AI  
Processing



Simple to  
Use and Deploy



Budget-Friendly

# After Deploying aiDAPTIV

Once produced, KV Cache is shared across the entire cluster. Long prompts, multi-turn dialogue, agent workflows, and RAG prefixes don't have to run from scratch every time — Time-to-First-Token drops immediately.

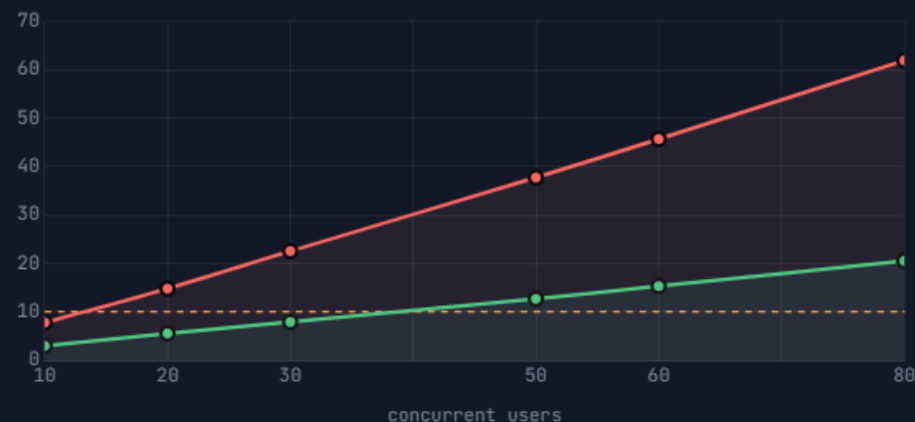
Concurrent Users **2x** Up

Time-to-First-Token **5x** Faster

Latency & throughput curves at currently selected context length

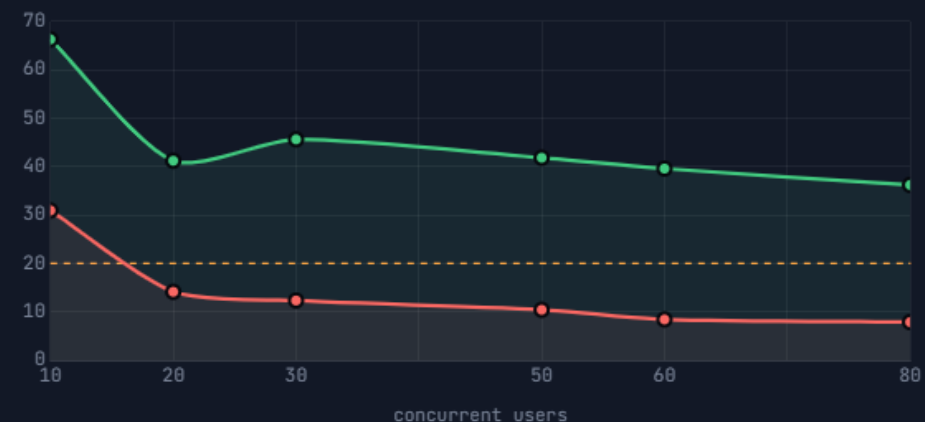
TTFT

SECONDS · LOWER IS BETTER



Token Per Second

PER USER · HIGHER IS BETTER



— w/o aiDAPTIV — aiDAPTIV - - - SLA threshold

H200 x1 · 32K context · TTFT ≤ 10.0s · TP ≥ 20 t/s

# Phison AI Data Platform

Flexible AI Deployment Options Tailored to Your Needs



## Application

Instantly deploy ready-to-use AI Solutions

Vision Module

Voice Module

Reasoning Module

Model Management

Data Bridge

aiDAPTIV Middleware

AI Framework

Message Queue

Database

MLOps/LLMOps Tools

## Module

Rapidly build and scale AI Agents and workflows

### Phison HCI Software

Software Deployment & Container Image Management

CPU/ GPU/ VM Resource Management

vGPU

Application Marketplace

Storage Management

Monitoring, Observability & Alerting

Security & Access Control

Model Registry

### Server

GPU Server | CPU Server | aiDAPTIV Cache Server | Storage Server (Pascari)

## Infrastructure

Deliver scalable AI infrastructure with centralized resource management

# Phison HCI Software

## AI-Ready Infrastructure with Effortless Expansion

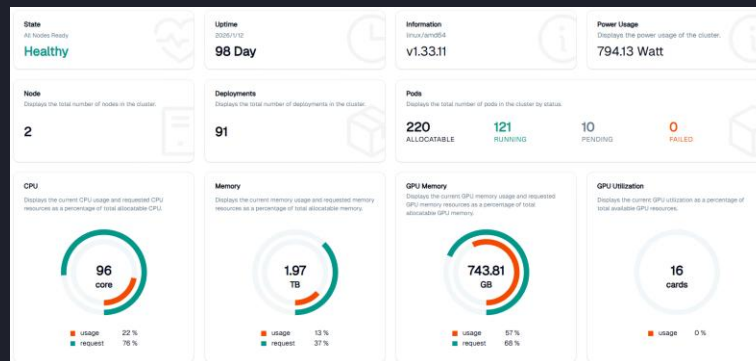
### Advantage

- ✓ Full-Stack Observability
- ✓ Predictive Maintenance
- ✓ AI Workload Optimization
- ✓ Data-Driven Scalability

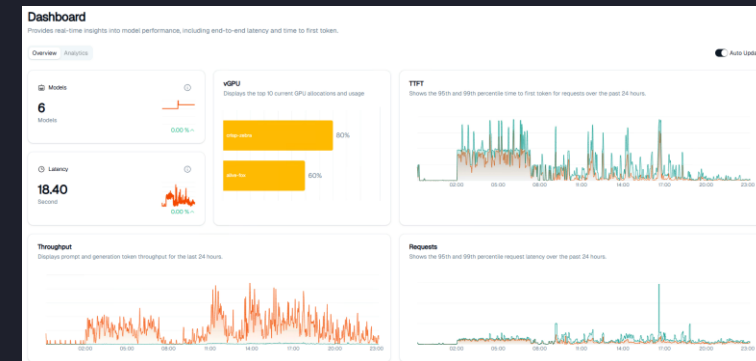
### Ready for

- ✓ High-Performance AI Inference
- ✓ Real-Time Resource & Power Tracking
- ✓ Heterogeneous Storage Integration
- ✓ Massive VM & Instance Scaling

### Cluster



### Model



### Compute



### Storage



# Built for Any Software

Easy to Integrate, Ready to Scale

aiDAPTIV integrates any software to enable fast, private, and cost-effective large model inference and training, leveraging scalable on-premises hardware optimization to eliminate cloud bottlenecks and ensure data sovereignty.

## Barking Dog

AI AMAZE - TeleAgent

An AI agent system for automated phone customer service and reservations.



## Wren AI

Wren AI

A Generative BI platform enabling natural language data analytics without SQL.



## Taiwan Mobile

Votext AI

A powerful voice recording tool for generating verbatim transcripts and meeting summaries.



## Phison

AI NEXUS

A platform combines the AI agents, automated workflows, and MCP standards to streamline enterprise AI deployment.



# Phison Hybrid Router for AI Agent

Local Control. Lower Cost.

Phison Hybrid Router delivers high-performance edge AI for AI Agent. Leveraging Pascari aiDAPTIV, it runs large-scale models locally—slashing cloud costs, securing data privacy, and optimizing operational efficiency.

## Dynamic MoE Deployment

Gemma 4

Qwen 3.5

16GB Memory  
iGPU Platform

## Persistent KV Cache

2.4s

with  
aiDAPTIV

90s

without  
aiDAPTIV

\*Latency at 16K context window

## Hybrid Model Routing

Edge model

Cloud model

70% Token Cost Savings

intel

ASUS

msi

acer

GMKtec

ASRock  
—Industrial—

***PHISON***

Client SSD

---

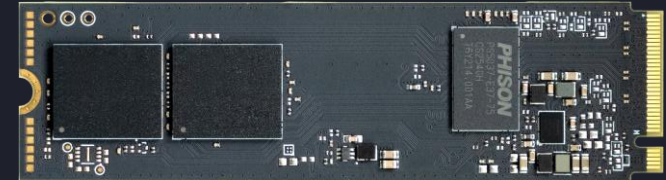


**PHISON**

# PS5037-E37T

Built for Speed, Optimized for Power

- PCIe Gen5x4
- TSMC 6nm process
- HMB DRAM-Less
- 4-channel with 16 CEs
- Capacity up to 8TB
- 3D TLC supported
- Single-CPU architecture
- Phison 8th Gen LDPC & RAID ECC
- AES-256 / TCG Opal / Pyrite
- Form Factor: M.2 2280



## Sequential Performance

Read: 14,900 MB/s

Write: 13,200 MB/s

## Random Performance

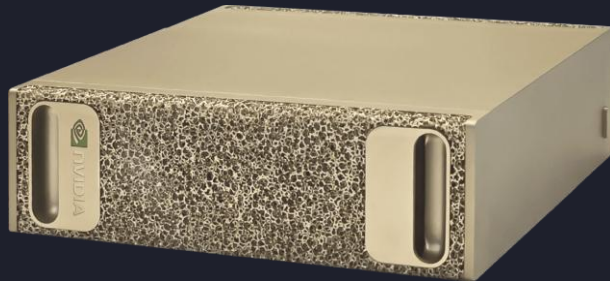
Read: 3,000K IOPS

Write: 3,000K IOPS

**PHISON** |  **NVIDIA**

# Phison E31T PCIe Gen5 on NVIDIA DGX Spark™

Power Efficient | Gen5 Performance | Proven Reliability



***PHISON***

# High Speed Signal Solution

---

PCIe Gen6 Redriver / Retimer



**PHISON**

# PS7161 / PS7163

High Speed PCIe Gen6 Redriver

- PCIe Gen6 4-channel (PS7161) / 16-lane (PS7163)
- FCLGA package (PS7161) / FCCSP package (PS7163)
- I<sup>2</sup>C mode support
- 4 level I/O for EQ and GAIN setting to reduce pin count
- Max EQ boosting 20dB
- Output linear range 1500mV
- Ultra low latency < 70ps
- EQ auto-tuning tool





**PHISON**

# PS7351

High Speed UFS 4.0 2-Lane Redriver

- UFS 4.0
- FCLGA 42 package
- I<sup>2</sup>C mode support
- High frequency boosting with minimal channel-to-channel cross-talks, additive jitters, and return losses
- Max EQ Boosting 10dB
- Output linear range 490mV
- Junction Temperature: -40 to 125°C
- Backward compatible with existing UFS generation transfer rates
- EQ auto-tuning tool





**PHISON**

# PS7261 / PS7262

High Speed PCIe Gen6 Retimer



- PCIe Gen6 16-lane
- Compliant with CXL 3.0
- Support link bifurcation
- Extend reach by 36dB at 64 GT/s
- Compliant with Intel PCI Express 6.0 Retimer Features and Standard BGA Footprint
- Low latency mode: <10ns



- PCIe Gen6 8-lane
- FCCSP package
- Junction temperature: -10 to 110°C
- Integrated AC coupling capacitors
- Support SMBus configuration and external EEPROM configuration loading
- Diagnostic tool for debugging

***PHISON***

# Client Mobile

---

UFS



**PHISON**

# PS8365 UFS 5.0

10GB/s UFS with Integrated Phison Pascari aiDAPTIV™  
Purpose-Built for Flagship AI Smartphone Chipset Platforms

- UFS 5.0 supported
- TSMC 6nm process
- 4-channel up to 4800MT/s
- Maximum 8 CEs (total)
- Phison 8th Gen 4KB LDPC, CRC, Turbo RAID ECC
- Capacity up to 2TB
- 3D TLC/QLC supported
- CNSA 2.0 supported



## Sequential Performance

Read: 10,800 MB/s

Write: 10,800 MB/s

## Random Performance

Read: 2,000K IOPS

Write: 2,000K IOPS



# Industry-First PCIe-to-UFS Bridge

UFS on M.2: Bridging Architecture Evolution

Phison PS5963 Bridge IC bridges the gap between PCIe performance and UFS cost-efficiency, enabling laptop makers to create ultra-slim designs for the mainstream market.

**The Bridge IC:** Seamlessly integrates UFS 3.1 into PCIe ecosystems.

**The Size:** Utilizes the M.2 2230 form factor, saving critical internal space for thinner, lighter devices.

**The Value:** The ideal high-performance solution for the 128GB–256GB mainstream laptop market.



**PHISON** | intel®

# Modular M.2 UFS

Advancing Scalable Storage Design

Pioneering a flexible future with a modular M.2 UFS standard that overcomes the serviceability risks of soldered BGA and enables upgradeability and scalability.

**Enhanced Serviceability:** Reducing motherboard scrap risks by enabling easy maintenance and storage upgrades.

**Design Freedom:** Providing manufacturers with the flexibility of a compact M.2 2230 form factor for more innovative device layouts.

**Versatile Compatibility:** Powered by Phison UFS 2.x to 5.x — one slot, multiple generations.

**Standardized Compatibility:** Fully compliant with PCI-SIG standards.



**PHISON** | **MEDIATEK**

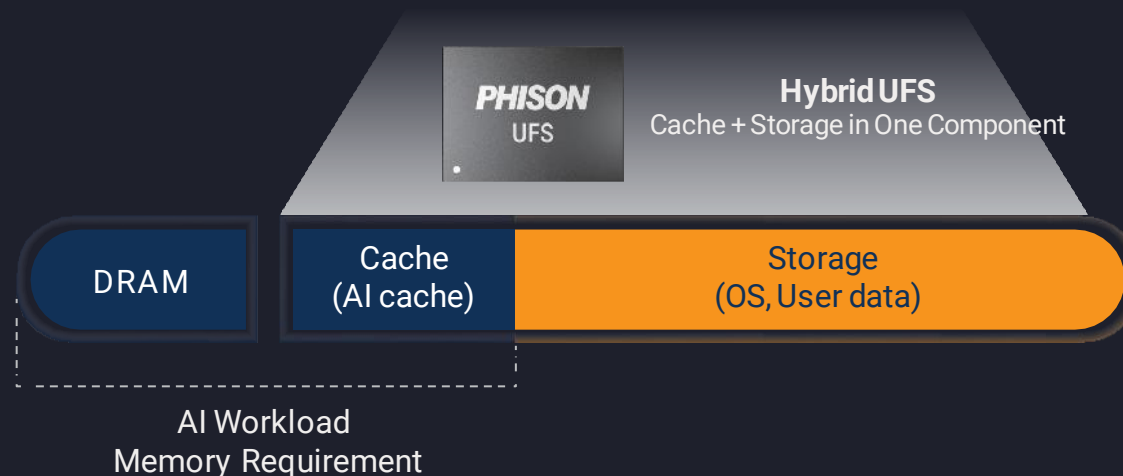
# UFS-Enabled On-Device AI

Phison Pascari aiDAPTIV™ and MediaTek Dimensity 9500

**Privacy:** On-device inference for privacy, security, and smooth multitasking.

**Performance:** Efficient on-device LLM execution for smartphones.

**Optimization:** Dynamic UFS offloading for lower memory usage.



# ***PHISON***

The Foundation that Accelerates Innovation™